

Magellan X unveils the SOL-X SmartWatch's latest features, adding a new dimension to worker safety

Singapore - 27 March 2023. Magellan X announces that the SOL-X SmartWatch, an ATEX certified safety smartwatch, will have three new features. The new features – Broadcast Message, Noise Monitoring and Fall Detection – will amplify the benefits of SmartWatch in providing a safe and secure work environment. The Annex contains illustrations of the SOL-X SmartWatch's new features.

One of the world's first intrinsically safe smartwatches, SOL-X takes industrial safety up a notch by providing a connected worker platform. The existing features of the product include heart rate and heat stress monitoring, GeoFencing, Crew Assist and more. This SOL-X solution is also compatible with major connectivity protocols such as Wi-Fi, Bluetooth, and Long Range Bluetooth.

“At Magellan X, we are committed to providing a solution that ensures safety by anticipating incidents and accidents. We continue to innovate on our connected worker platform and the new features will further improve situational awareness for workers and operational visibility for supervisors on site.” says Alister Leong, Chief Product Officer of Magellan X.

New features

1) Broadcast Message

Timely communication is key to ensuring that operations are performed effectively without compromising the safety of workers. The SOL-X solution now has a broadcast message feature in the new release which enables users to pass and receive critical information in a timely and accurate manner to mitigate the effects of serious accidents and efficiently conduct emergency drills, mustering etc. Supervisors in control rooms can send broadcast messages through a dashboard which will then be communicated to the workers on their SmartWatches. More details can be found at section 1 of the Annex.

2) Noise Monitoring and Alerts

Organisations maintain Noise Survey Reports to monitor noise exposure levels at the worksite. Magellan X has simplified this process by introducing a Noise Monitoring feature in the SOL-X SmartWatch. The SmartWatch will measure noise levels 4 times per hour and the data can be used to provide noise level readings for Noise Surveys. An alert is triggered when the noise levels are consistently high and workers who are exposed to such damaging levels can take precautions. Further illustrative explanations are shown at section 2 of the Annex.

3) Fall Detection

Falling from height is a major contributor of critical injuries at worksites regardless of industry. SOL-X's Fall detection feature sends a message to the Dashboard when a fall is detected in near real-time. The message displays the identity of the worker and their last known location for the supervisors to respond accordingly in a timely manner, potentially reducing the escalation of the harm inflicted. More details are set out at section 3 of the Annex.



About Magellan X

Magellan X specialises in developing Environmental, Social and Governance (ESG) technologies, for the oil and gas, mining, chemicals, and maritime sectors. We are backed by MISC and BCG Digital Ventures. Magellan X's technology solutions address ESG needs of our clients and better position them to achieve their sustainability goals through IIoT solutions that accurately capture near real time data streams and produce analysis using artificial intelligence.

Our suite of specific solutions includes:

- ecoMax - Decarbonisation
- SOL-X - Worker Safety
- Propeller - Inventory Optimisation

For more information, please download the [SmartWatch brochure](#).

Media Contacts

Magellan X Pte. Ltd.

Eric Graffagnino / Gladys Ng

Chief Marketing Officer / Associate Director, Marketing & Communications

+65 8866 0172 / +65 9145 6677

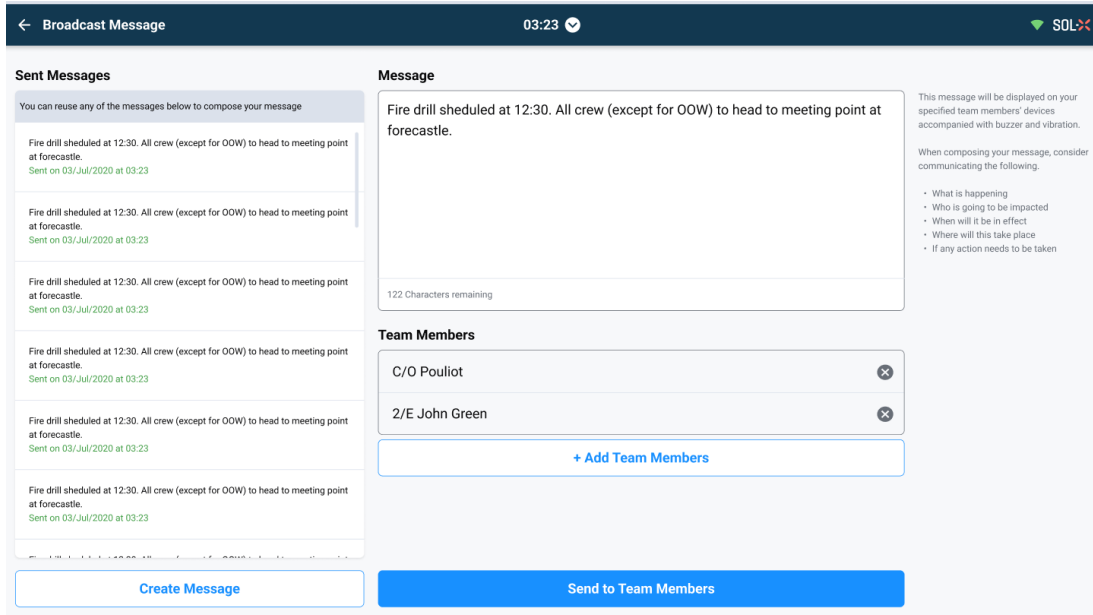
eric.graffagnino@magellanx.co / gladys.ng@magellanx.co



Annex

1. Broadcast Message

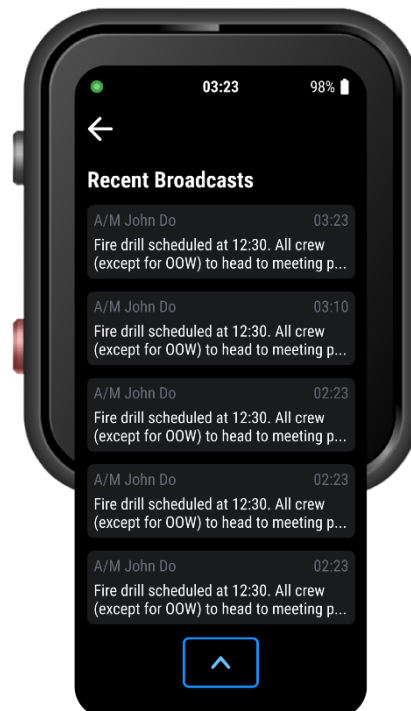
a) Broadcast message created on Dashboard



b) SmartWatch Broadcast Message shown



c) SmartWatch Broadcast List View

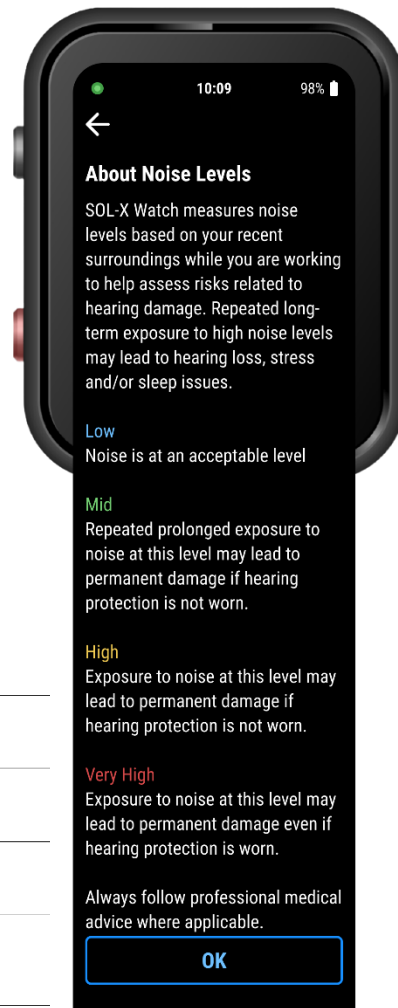


2. Noise Monitoring and Alerts

a) SmartWatch Default Home Screen

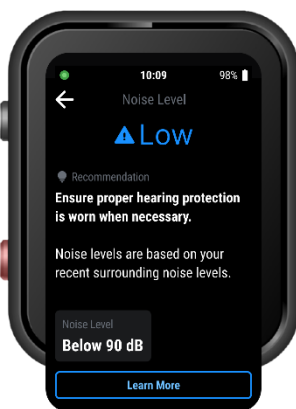


b) SmartWatch Noise Levels Information Page

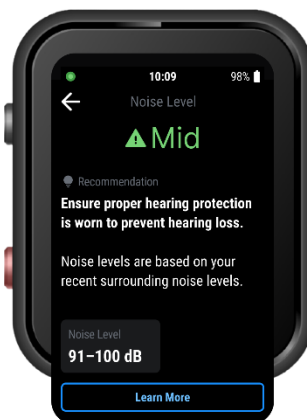


Low	dB<90dB - low (Noise level is normal)	Ensure proper hearing protection is worn when necessary.
Mid	91dB<dB<100db - medium (Reminder that Hearing protection is required)	Ensure proper hearing protection is worn to prevent hearing loss.
High	101dB<dB<120dB - high (Reminder that Hearing protection is required)	Ensure proper hearing protection is worn and limit exposure to prevent hearing loss.
Very High	121dB<dB - Very high (Notify user of loud noise)	Ensure proper hearing protection is worn and severely limit exposure to prevent hearing loss.

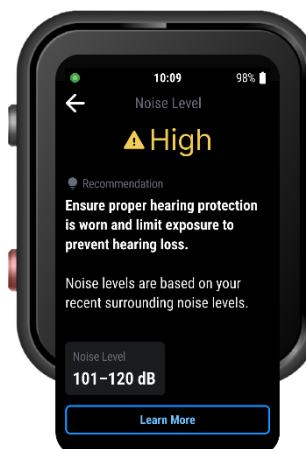
c) Low Noise Page



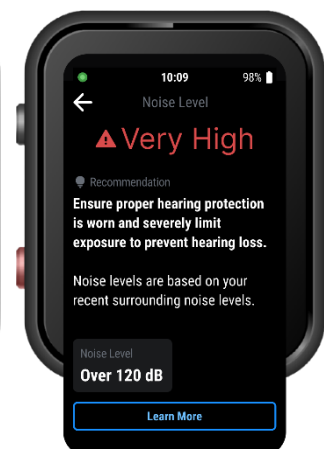
d) Mid Noise Page



e) High Noise Page

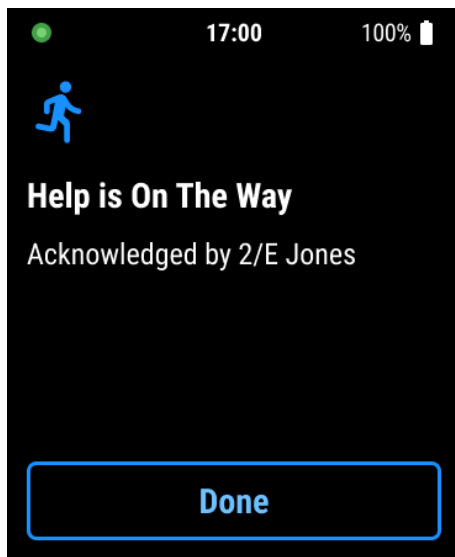


f) Very High Noise Page

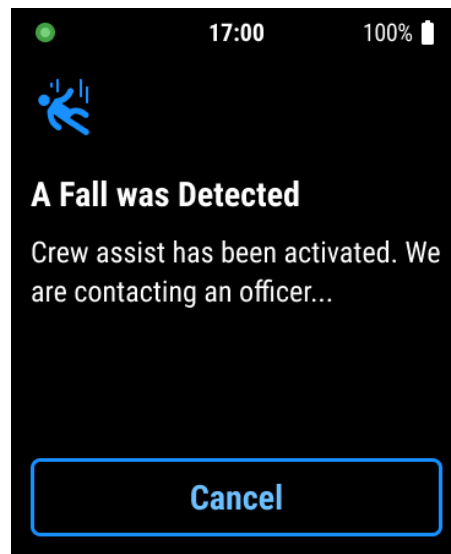


3. Fall Detection

a) Crew Assist - Alert Acknowledged



b) Crew Assist - Fall Detection



c) Crew Assist Fall Detection on Dashboard

